





ازدهار
ezdihar

The world is witnessing the metamorphosis of Saudi, live.

Vision 2030 has allowed for this generation to flourish and realize a new reality; proving instrumental in all aspects of change, encompassing everything from art and culture to wellness and technology.

The under 30 demographic, which accounts for roughly 80% of Saudi's population, is the propelling force driving momentum in tandem with current government leadership - coming together to finally tap into the abundant potential in the Kingdom.

Future

The landscape of Saudi is changing.
At Ezdihar, we are paving that change.

The present dynamic infrastructural and cultural acceleration puts the Kingdom and its vibrant economy not only at the center of the Middle East, but at the forefront of the world.

With every project, we elevate the way individuals live, work, and evolve through their lives.

We are proud to build these pillars, elevating the work life balance and setting a new standard through:



Urban environments



Sleek Designs



Quality



Integrity



Vision

To consistently provide value for our customers and stakeholders by delivering high quality communities and innovative real estate solutions without compromise.



Mission

To create unique, high quality Saudi communities that connect people with places and active, vibrant lifestyles whilst embracing innovation and sustainability.

Values



Community

At Ezdihar we recognize that the most valuable resource we have is our **people**. Through our embrace of **quality** and **innovation** we aim to **create communities** that are designed with our residents and tenants in mind – creating a unique Ezdihar community, a **proudly Saudi community**.



Innovation

We continually strive to learn from our experiences and to adopt new ideas in how we **design, build, and deliver** our projects for our customers and stakeholders. For Ezdihar, the purpose of **innovation** is to improve the **experiences, feelings, and memories** we **create** for our customers when they **experience their Ezdihar community every day**.



Quality

At Ezdihar **quality** is at the core of everything we do. Quality in the land we choose for our **communities**, the quality of our **master planning, architecture, open spaces**, services, and facilities we design to become an Ezdihar community. **Quality projects delivered without compromise is the Ezdihar way**.



Business Ecosystem



Development & Design



Property & Investment Management



Leasing & Tenant Management



Marketing, Advertising & Sales

Sister Companies

EVOX

موفي
muvi
سينما CINEMAS

أكتيف
ACTIV

ezditek
Digital Infrastructure



GARDEN
RESIDENCE



Site area

24,276

sqm



Total residential gross floor area

19,245

sqm



Residential unit area

39,275

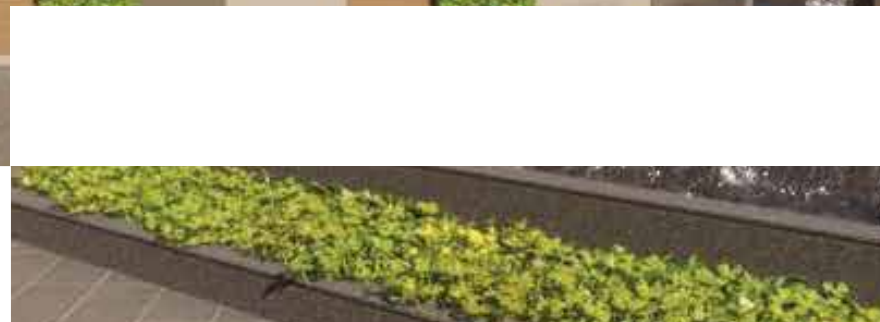
sqm



Number of apartments

256





A central garden area



Entertainment / recreation area



State-of-the art gym



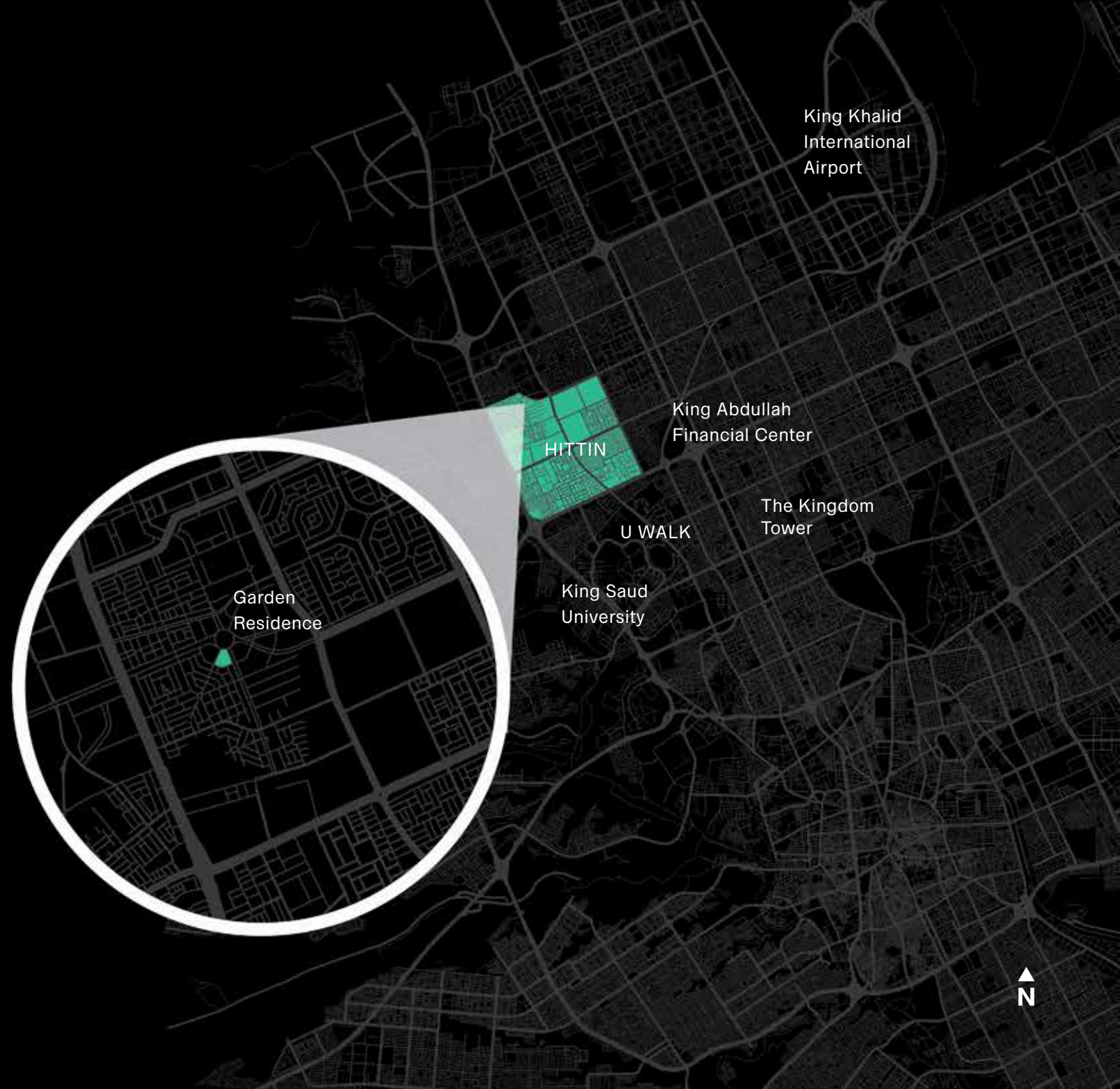
Mini movie theatre

Location & Access

Garden Residence is located in Hittin district, North Riyadh, on a land area of approximately 24k square meters

Distance from

- The Riyadh Boulevard ▶ 5 minutes
- King Saud University ▶ 7 minutes
- Diriyah Gate ▶ 10 minutes
- U Walk ▶ 11 minutes
- The Kingdom Tower ▶ 14 minutes
- King Abdullah Financial Center ▶ 15 minutes
- King Khaled International Airport ▶ 25 minutes







COQS
VE ٧٩
JEDDAH جدة



Site area



137,640

sqm

Total built up area



90,000

sqm

Gross leasable area



73,000

sqm

Lagoon area



51,000

sqm



A central man-made lake



Gondola Service



Sandy Beach



A central, state-of-the-art dancing fountain, lighting, and special event features



Entertainment & Recreation Areas



F&B components including dining, casual dining, and cafés

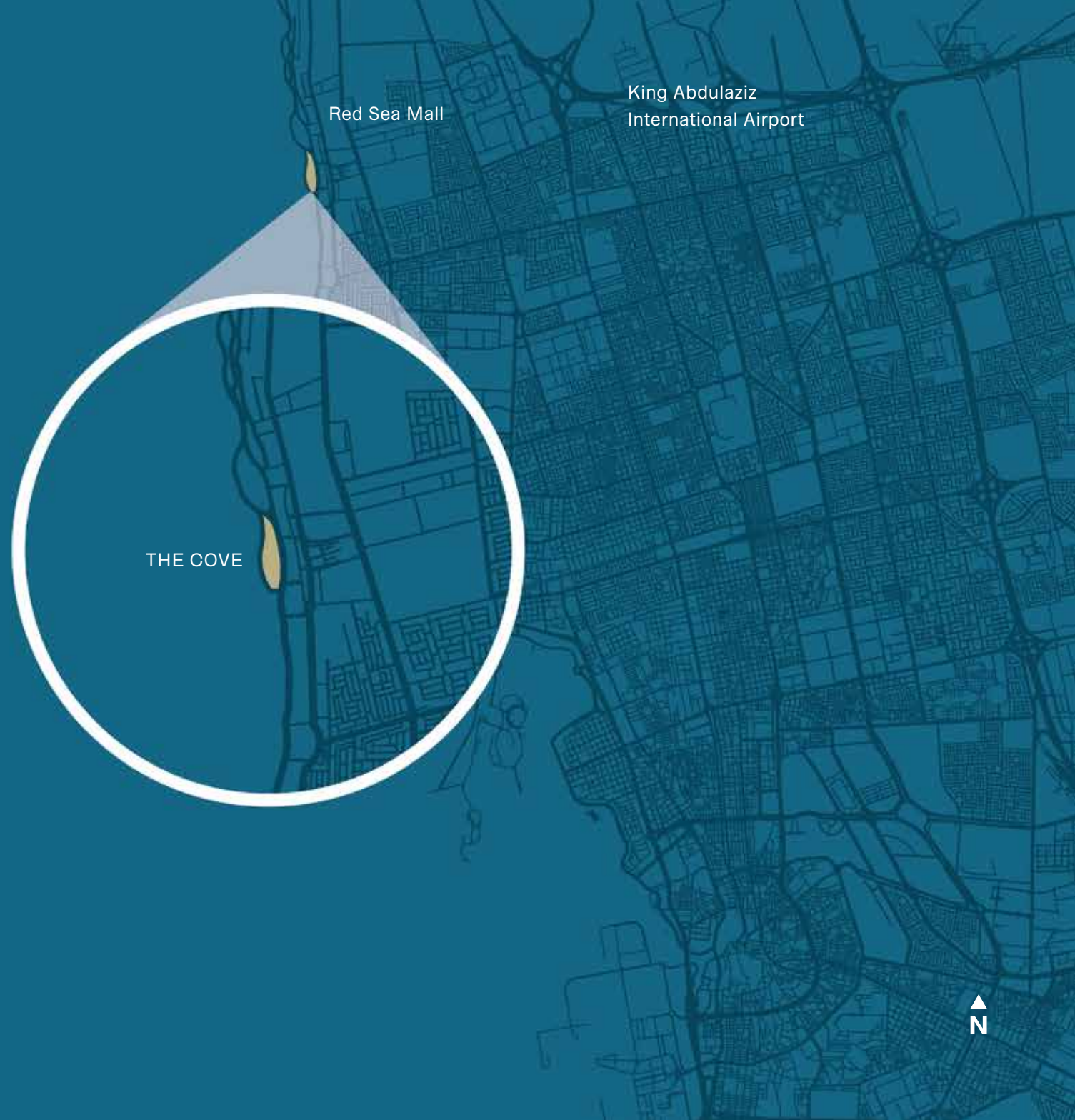


Location

The Cove is situated in an unmatched, iconic location along Jeddah's prime stretch of the Red Sea

Distance from

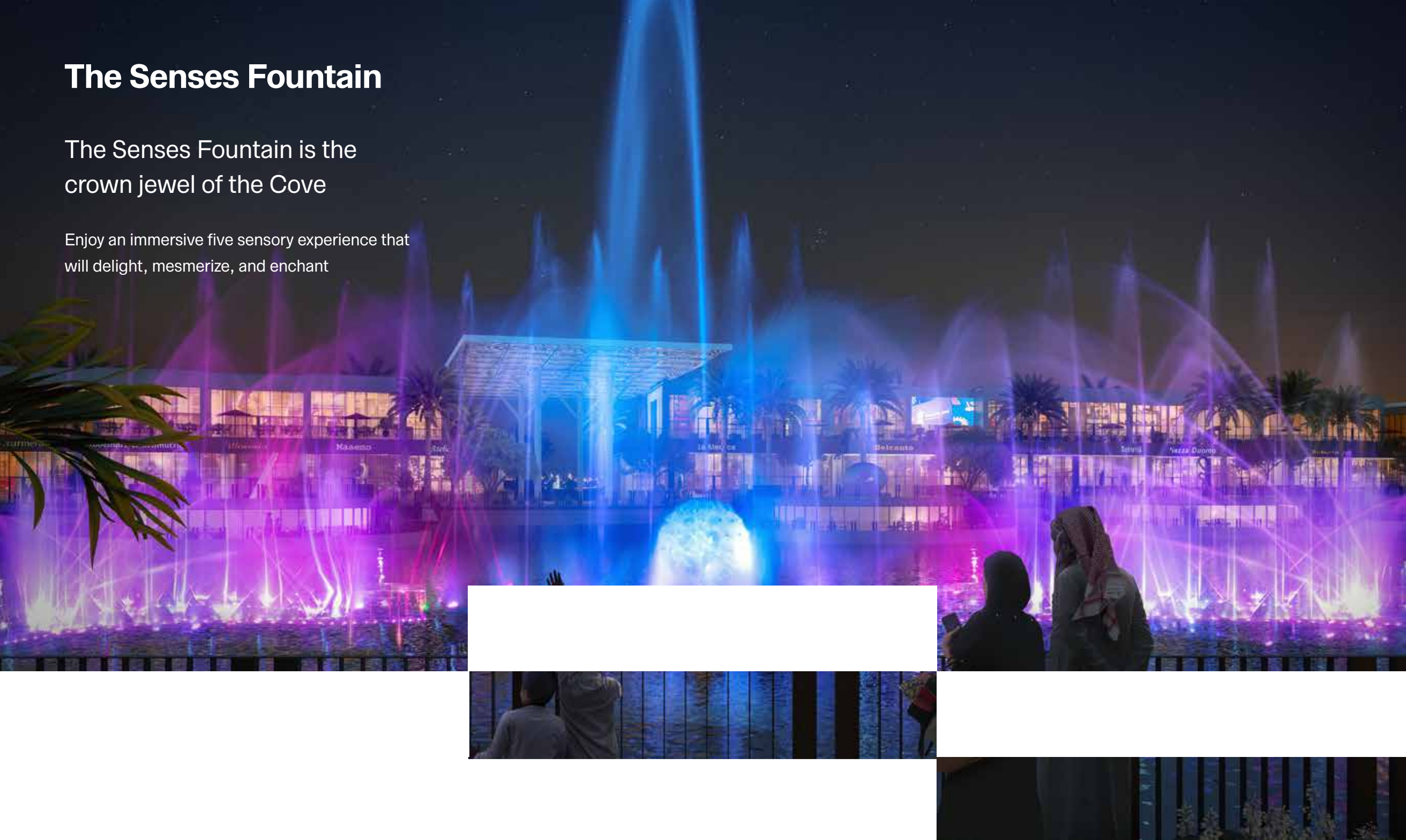
- King Abdulaziz International Airport ▶ 21 minutes
- Red Sea Mall ▶ 4 minutes
- Jeddah Corniche Circuit ▶ 2 minutes
- Jeddah Yachts Marina ▶ 30 minutes
- Jeddah Yacht Club ▶ 15 minutes



The Senses Fountain

The Senses Fountain is the crown jewel of the Cove

Enjoy an immersive five sensory experience that will delight, mesmerize, and enchant





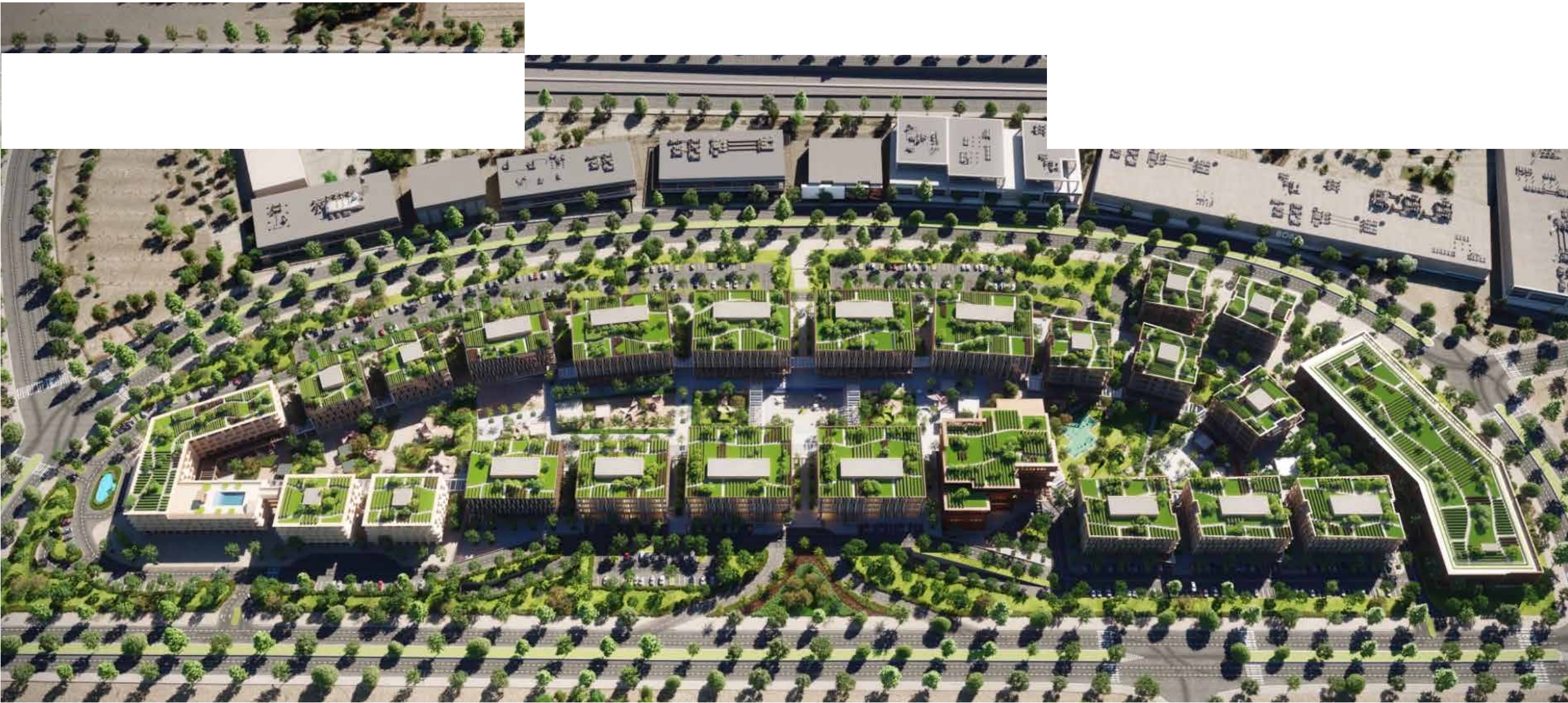


ازدب پارک Ezdi Park

By Ezdihar

In a strategic location near Riyadh's King Saud University, EzdiPark integrates business and leisure, merging work, comfort, and creativity.

With sleek, innovative designs and wide-open spaces, you can work, stay, shop, eat, and more, all within the project's offerings.



Location

EzdiPark occupies a coveted location within the campus of King Saud University, the preeminent education and research institution in Riyadh.

EzdiPark is also ideally connected to all commercial zones and growth areas driving the expansion of Riyadh as a global center of commerce:

- U-Walk Shopping Center > 100m
- Riyadh Metro Station > 3km
- Diriyah > 7km
- King Abdullah Financial District > 8km
- Kingdom Tower > 9km
- Diplomatic Quarter > 10km
- King Khalid International Airport > 38km

[CLICK HERE](#)











Ezdi Park

Success is a journey, not a destination.



ezdihar.com | info@ezdihar.com | 9200 31 360

  [ezdiharliving](https://www.instagram.com/ezdiharliving)